

Klas Bengtsson, Product Manager, IRB 760

# IRB 760

# The full layer palletizer

# IRB 760

## Overview of Main features



- Fastest palletizing robot in its class
- Compact to fit into existing packing lines
- Integrated process cabling
- Strong wrist unit for handling large inertia
- The 4-axis design is optimized for palletizing
  - Shorter cycle time
  - Lower weight of robot arm
  - Higher payload
  - Lower complexity

# IRB 760

## Focus Applications



- Reach and payload optimized for full layer palletizing of
  - Beverage
  - Chemicals
  - Building material
  - Food
  - And more...

# IRB 760 Full layer palletizer

## Largest member in the palletizing family



	IRB 460	IRB 660	IRB 760
Payload (kg)	110	180/250	450
Weight (kg)	925	1750	2310
Repeatability (mm)	0.2	0.05	0.03
Power consumption (kW)	3.67	3.17/2.36	2.75
Protection	IP 67	IP 67	IP 67
Temperature range	0-45°C	0-50°C	0-45°C
Cycles/hr with 60 kg payload	2,190	1,570/1,360	1,500

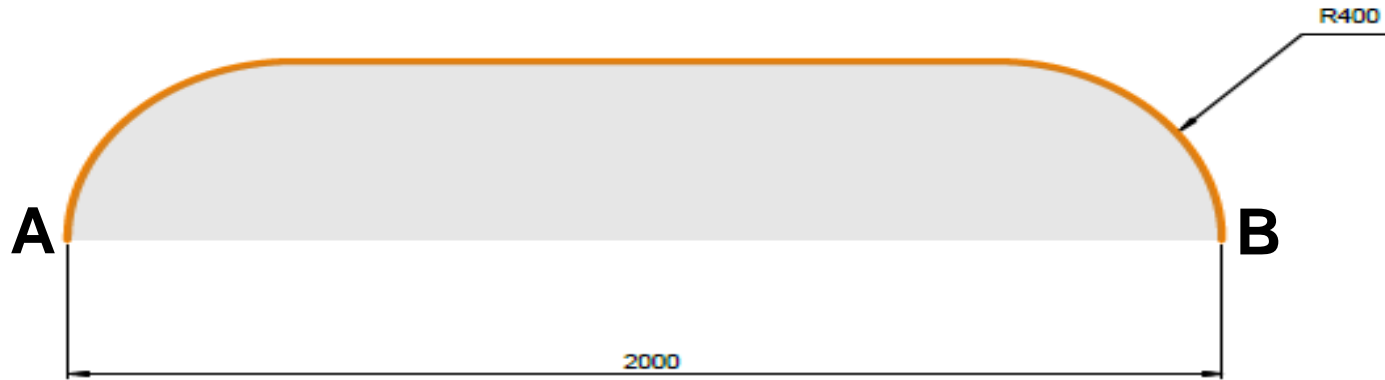
# Key data



- Payload: 460 kg
- Reach: 3,180 mm (to center of axis 4)
- Height: 2,504 mm
- Foot print: 1,140 x 800 mm
- Weight: 2,310 kg
- Protection: IP67

# IRB 760

The world's FASTEST full layer palletizer

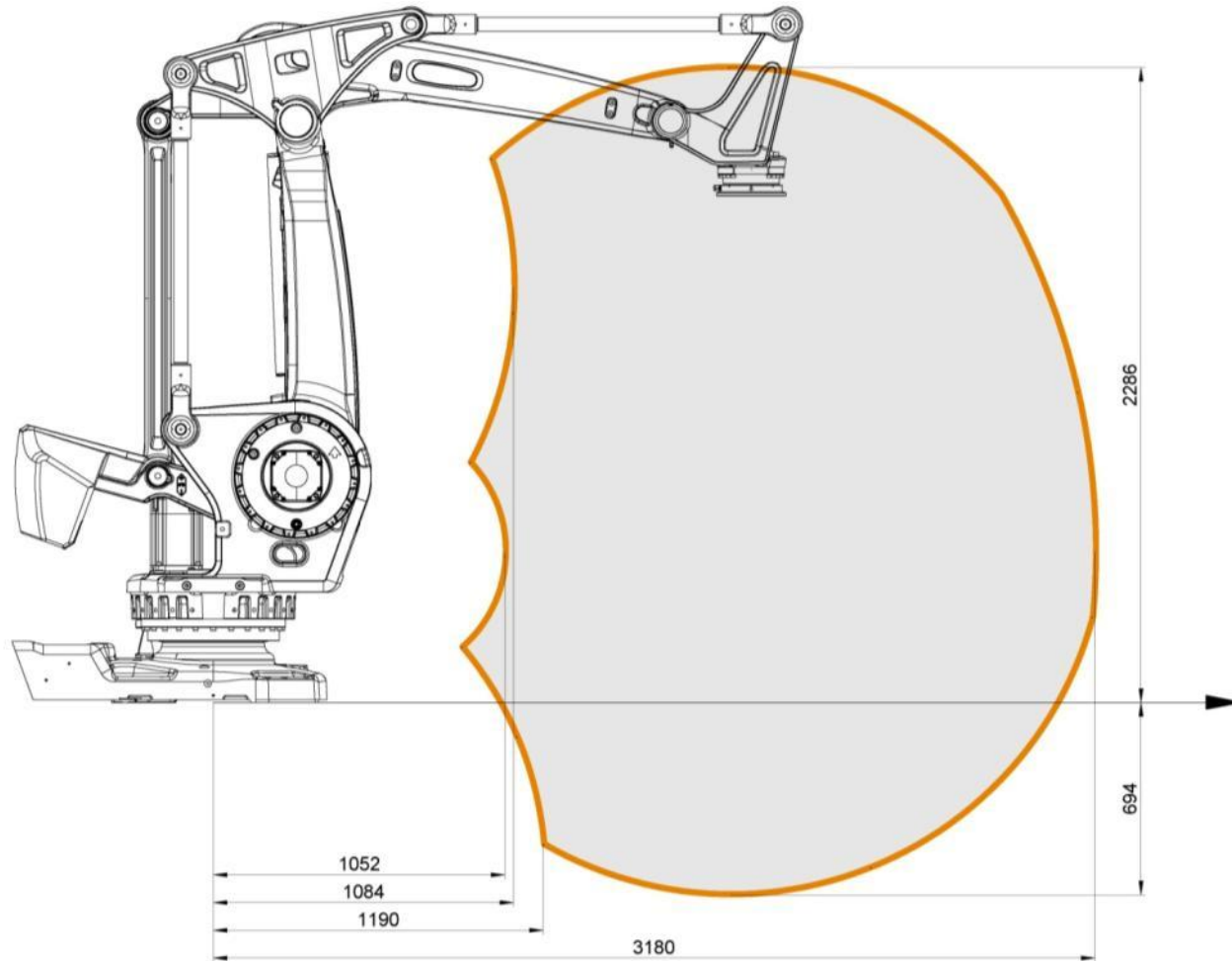


**A well defined cycle - the industry benchmark.**

**From A to B and back to A**

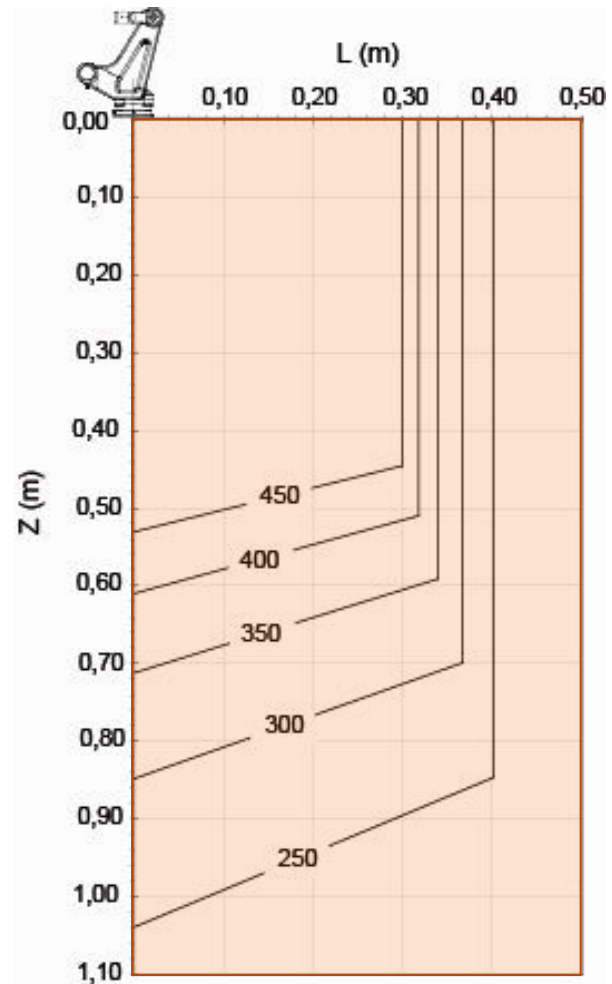
<b>Payload</b>	<b>60 kg</b>	<b>450 kg</b>
Cycles per hour	1,500	880

# Working Range



# IRB 760-450/3.2

## Load diagram





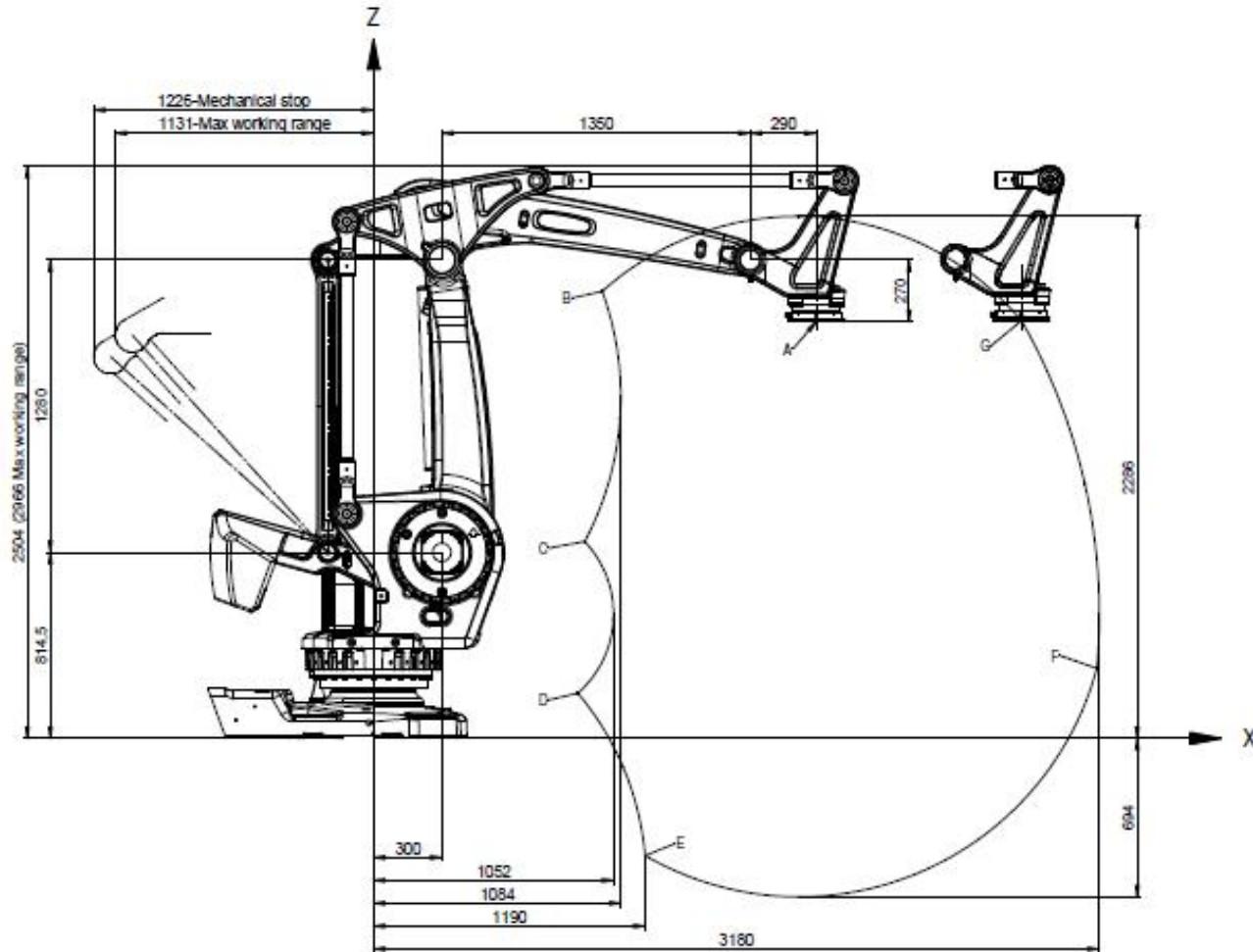
# Axis work range and speed



Axis	Axis range	Axis speed
Axis 1	+180° to -180°	85 °/s
Axis 2	+85° to -42°	85 °/s
Axis 3	+120° to -20°	85 °/s
Axis 6	+300° to -300°	160 °/s

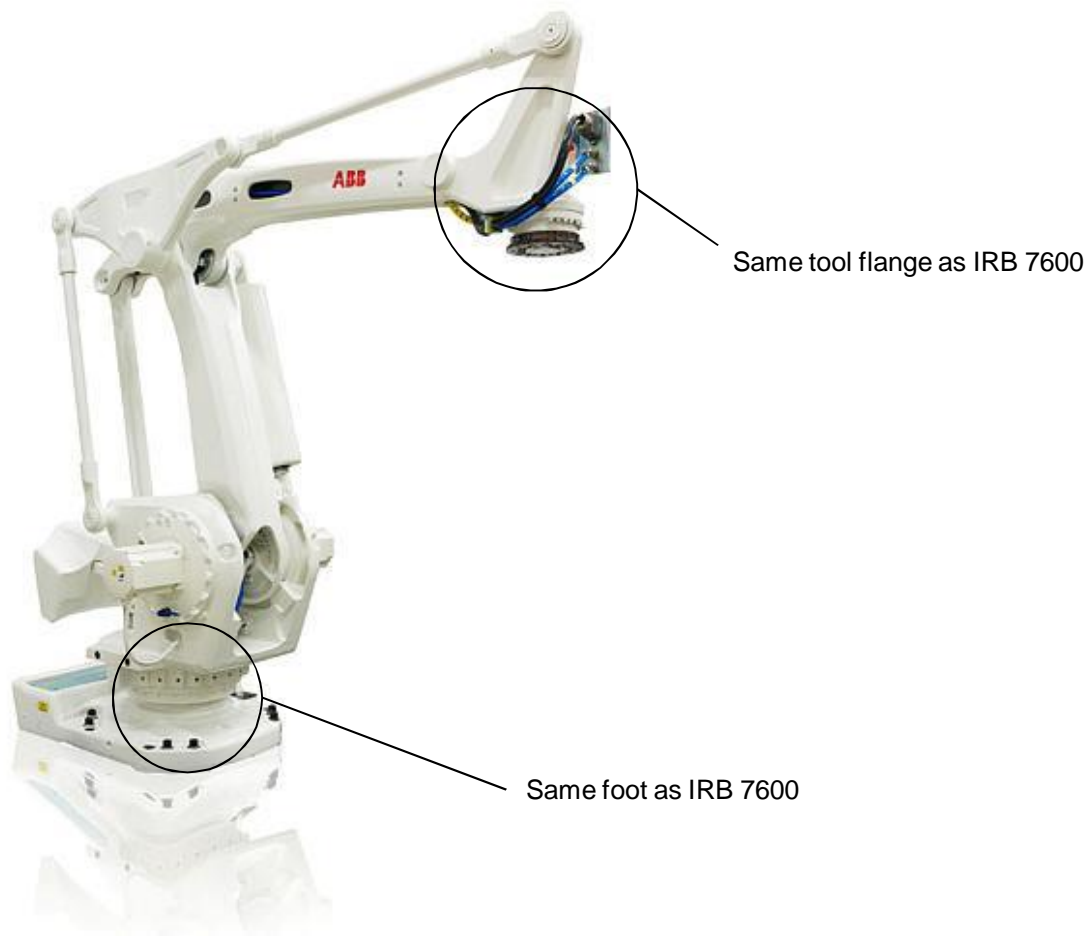
# IRB 760-450/3.2

## Work range and dimensions



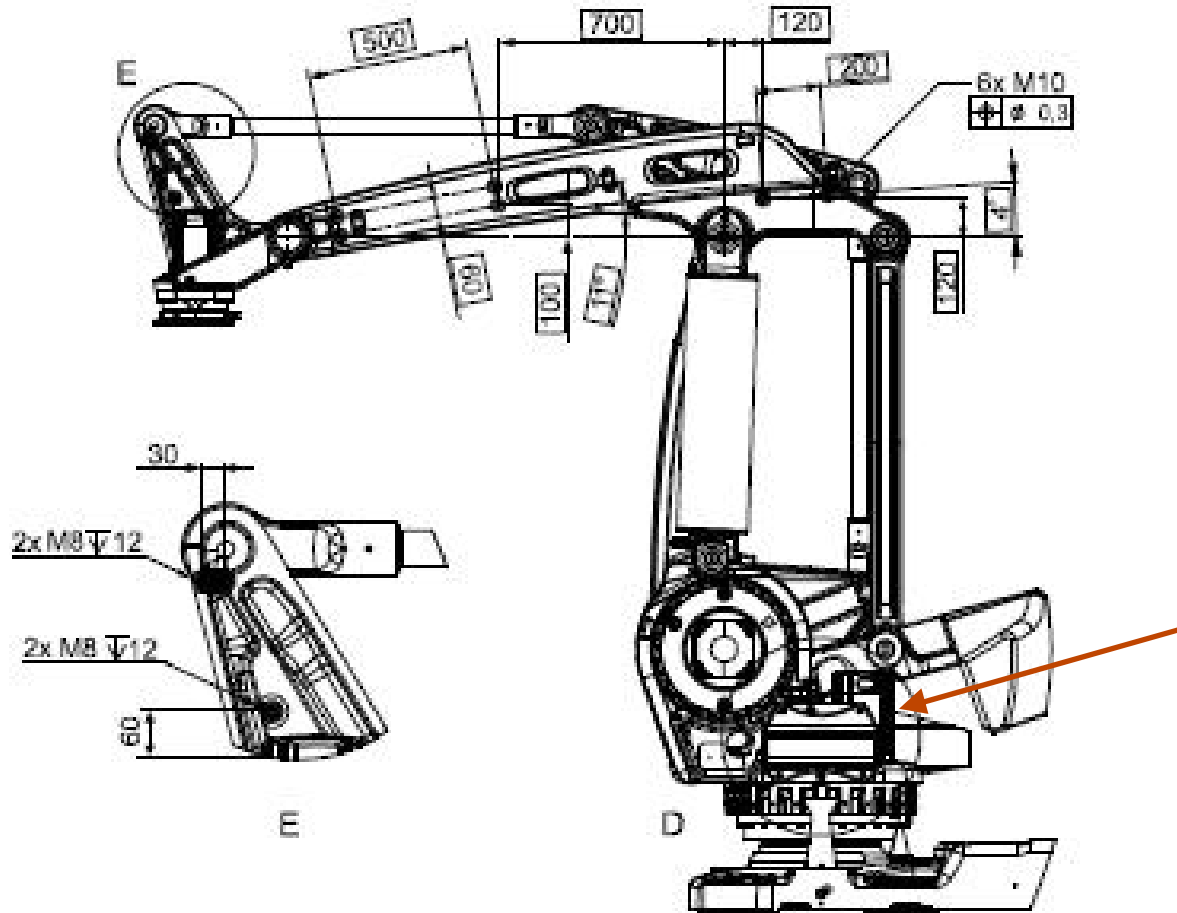
# IRB 760

## Mechanical mounting interfaces



# IRB 760

## 150 kg extra load permitted on frame



# Additional options



- Color
- Media and communications
  - CP/CS + DeviceNet or PROFIBUS  
+ 2 x ½” air (16 bar)
- Connector kits
  - On foot
  - On upper arm
- Work range limit axis 1
- Extended work range axis 1
- Safety lamp
- Fork lift device
- RoboCare
- Warranty

Power and productivity  
for a better world™

