

## Chain Driven Roller Conveyor, BK-CDLR

- Using “INTERROLL” double sprocket roller.
- All the hazard point of the moving parts are fully covered.
- Able to carry up to 3,000 kg pallet load.
- Modular assembly.
- Max length up to 6,000mm.



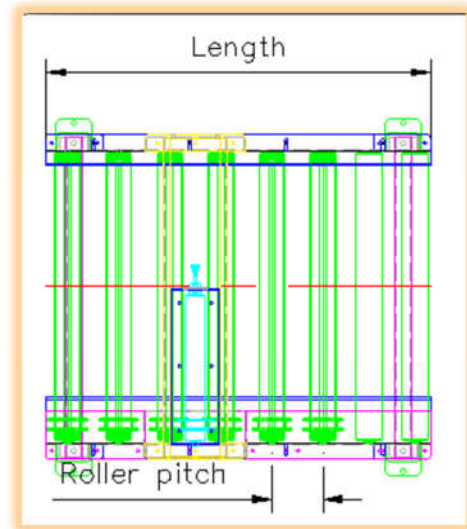
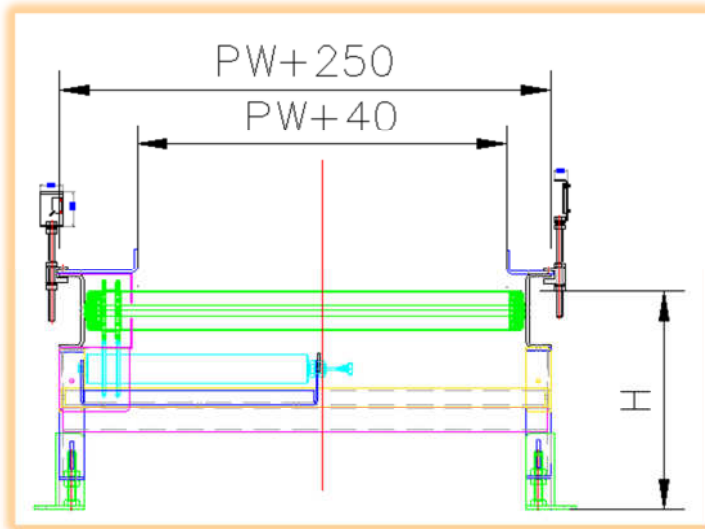
### SPECIFICATION:

Model	CDLR80 x 3T	CDLR89 x 3T
Capacity	2,000kg	3,000kg
Length	Max 6,000mm	
Width	Pallet width + 40mm	
Height	Min 400mm or 250mm depend on motor mounting	
Roller maker	“INTERROLL”, 3950 series, zinc plated	
Motor power	0.4,0.75KW, 1.1 KW, 1.5KW	
Motor mounting	Foot mounting or hollow shaft direct mounting	
Drive chain	RS50	
Adjustable Height	+/- 30mm	
Conveyor speed	8-25 m/min	

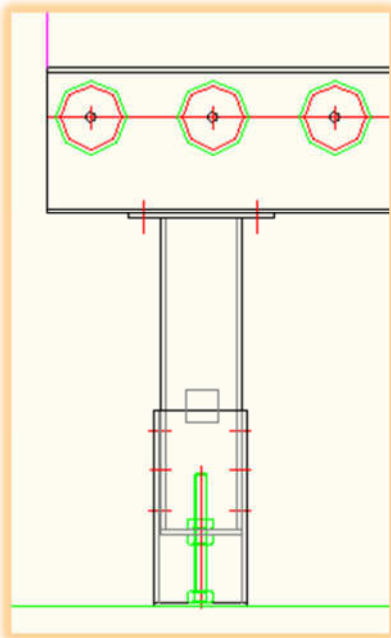
Adjustable Side Guide

Protective Guard: Drive chains are fully covered. No hazard of hand catching point





### Booth type support leg



- The booth type support structure is more rigid and strong compare to the ordinary foot pad design.

### Option:

1. Sensor and sensor brackets.
2. Variable speed can be applied if required.
3. Load cell can be integrated to check weight when required.
4. End stopper or air stopper to stop the pallet.